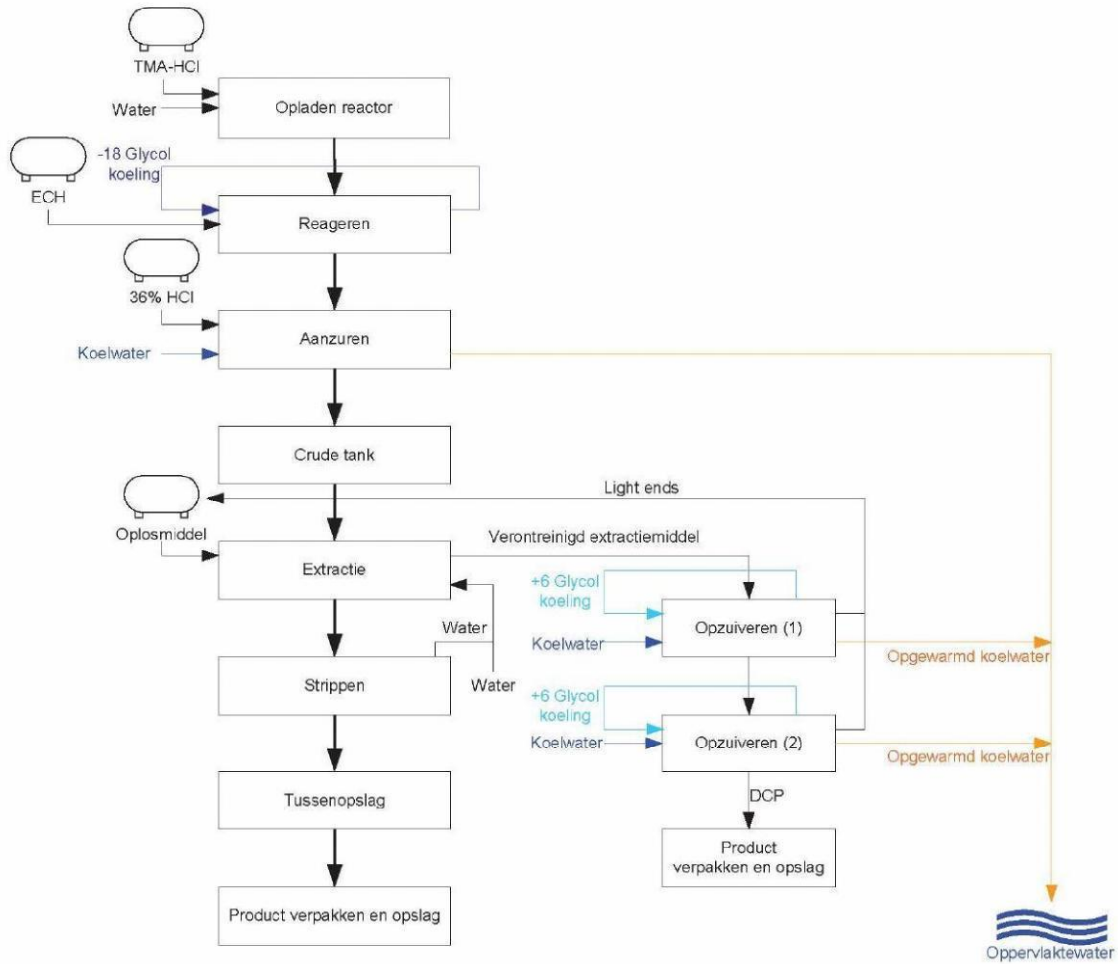
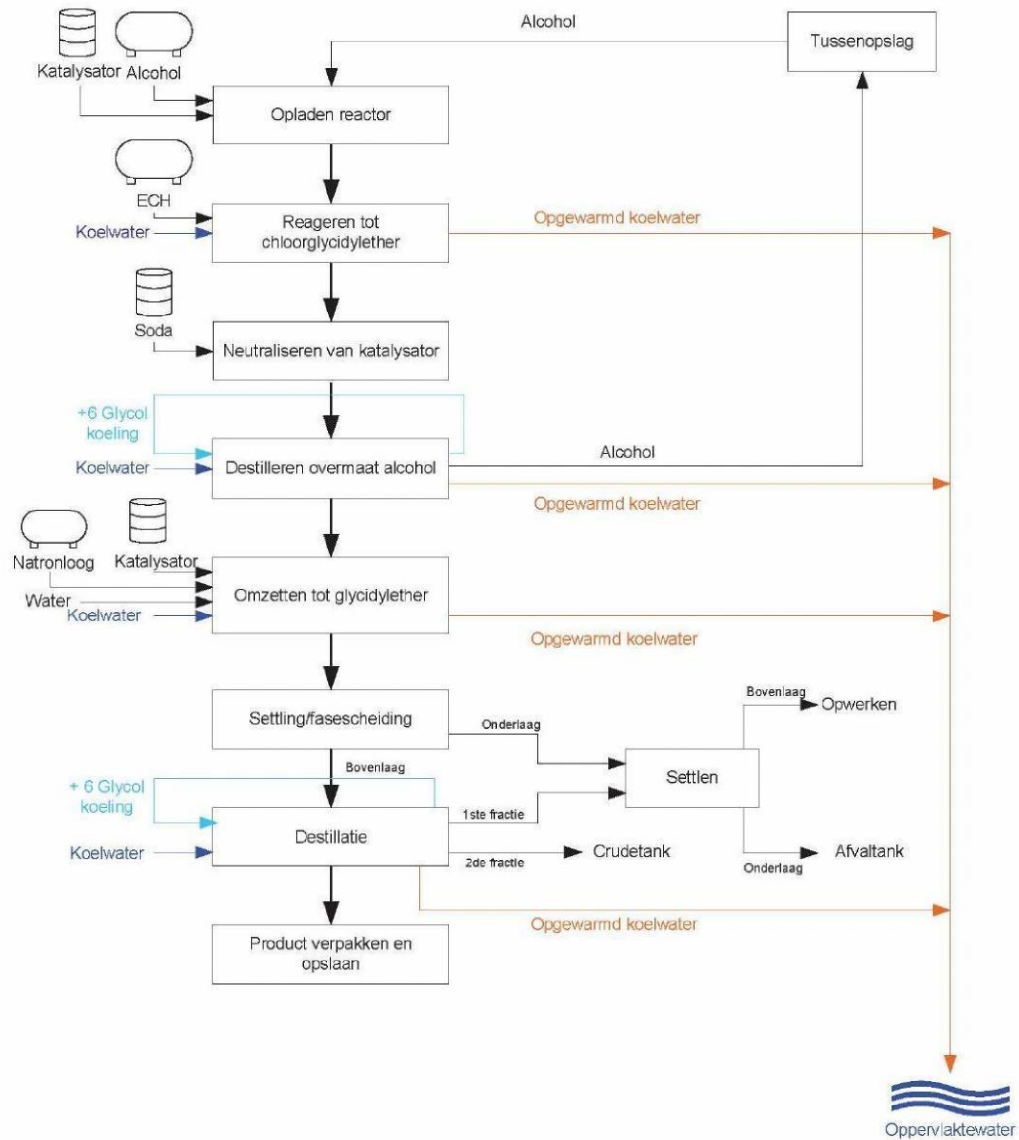


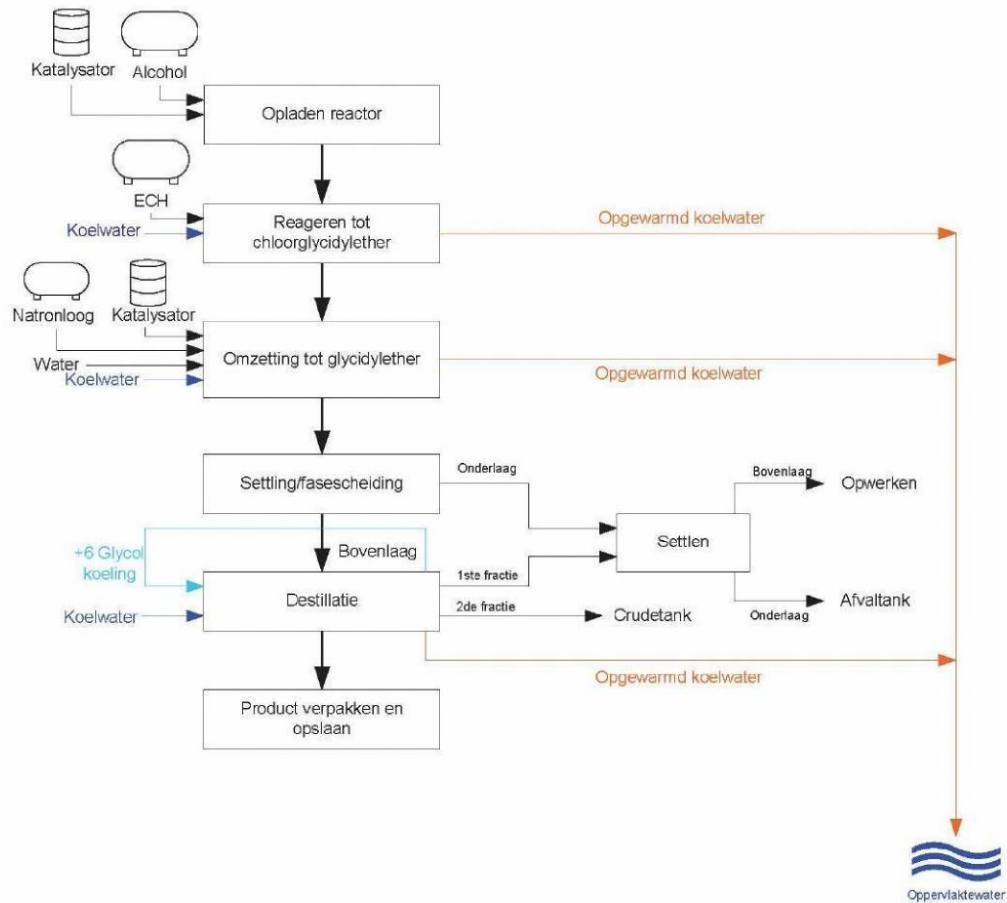
## REAGENS



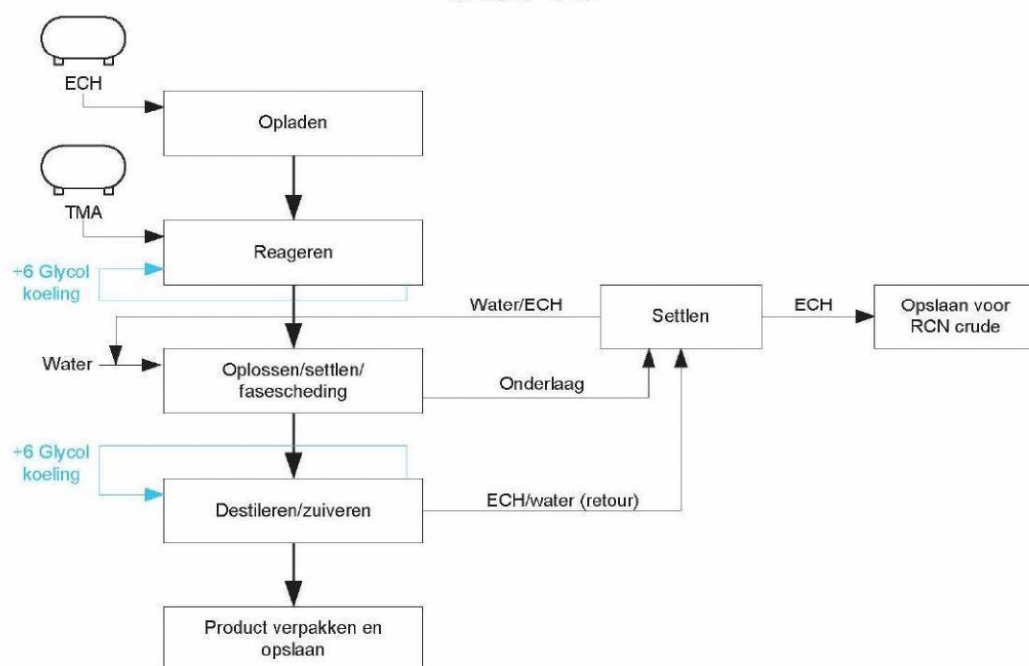
## GLYCIDYLETHER (gedestilleerd)



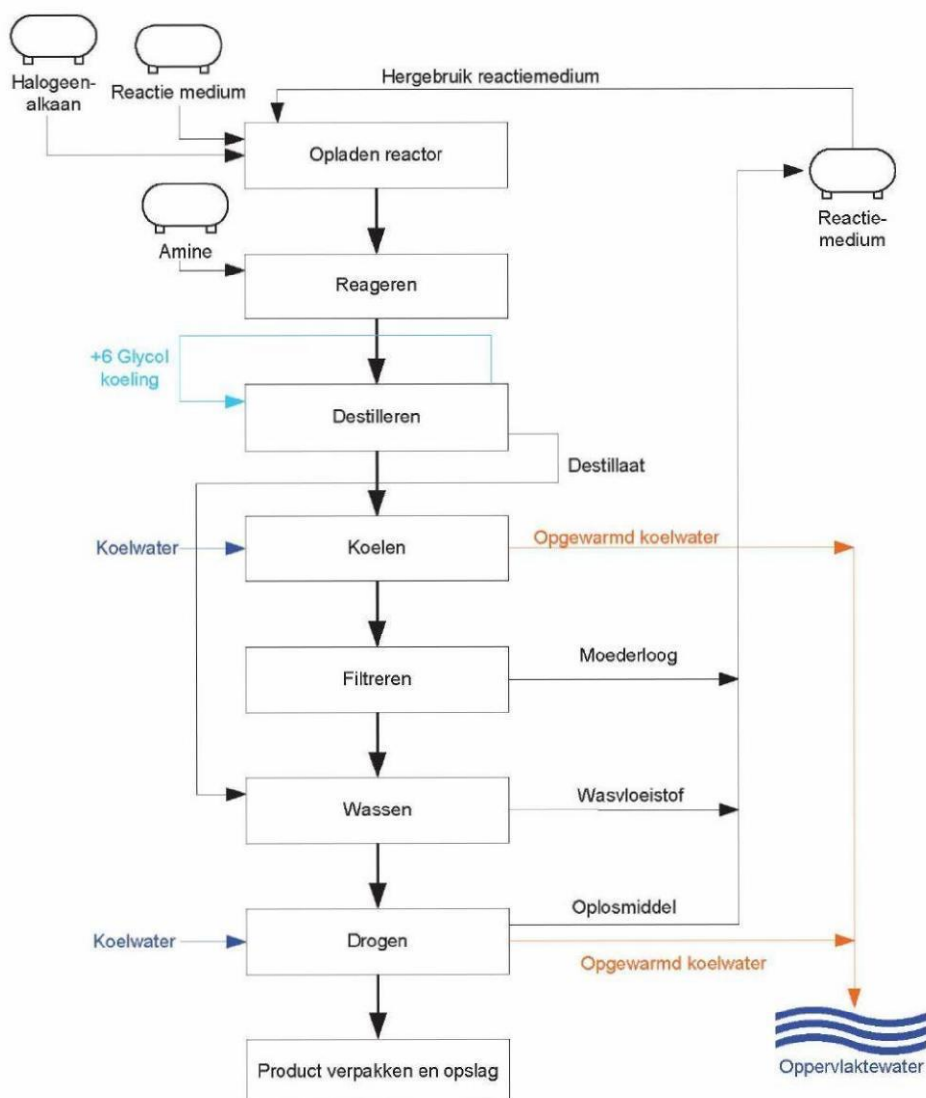
## GLYCIDYLETHER (niet gedestilleerd)



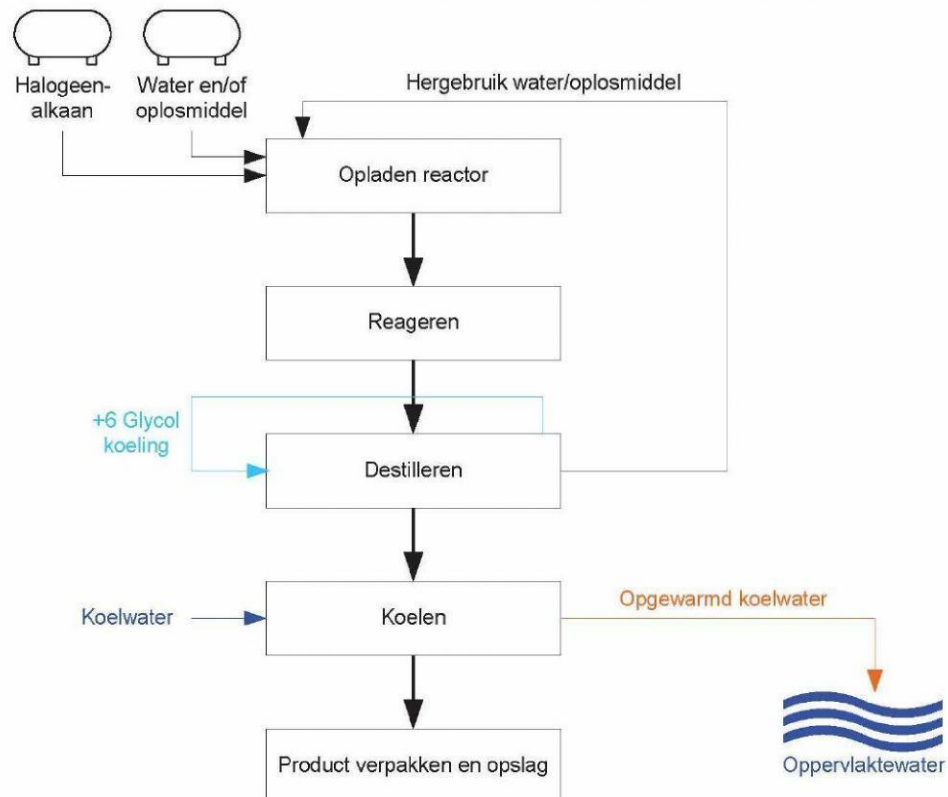
# GMAC



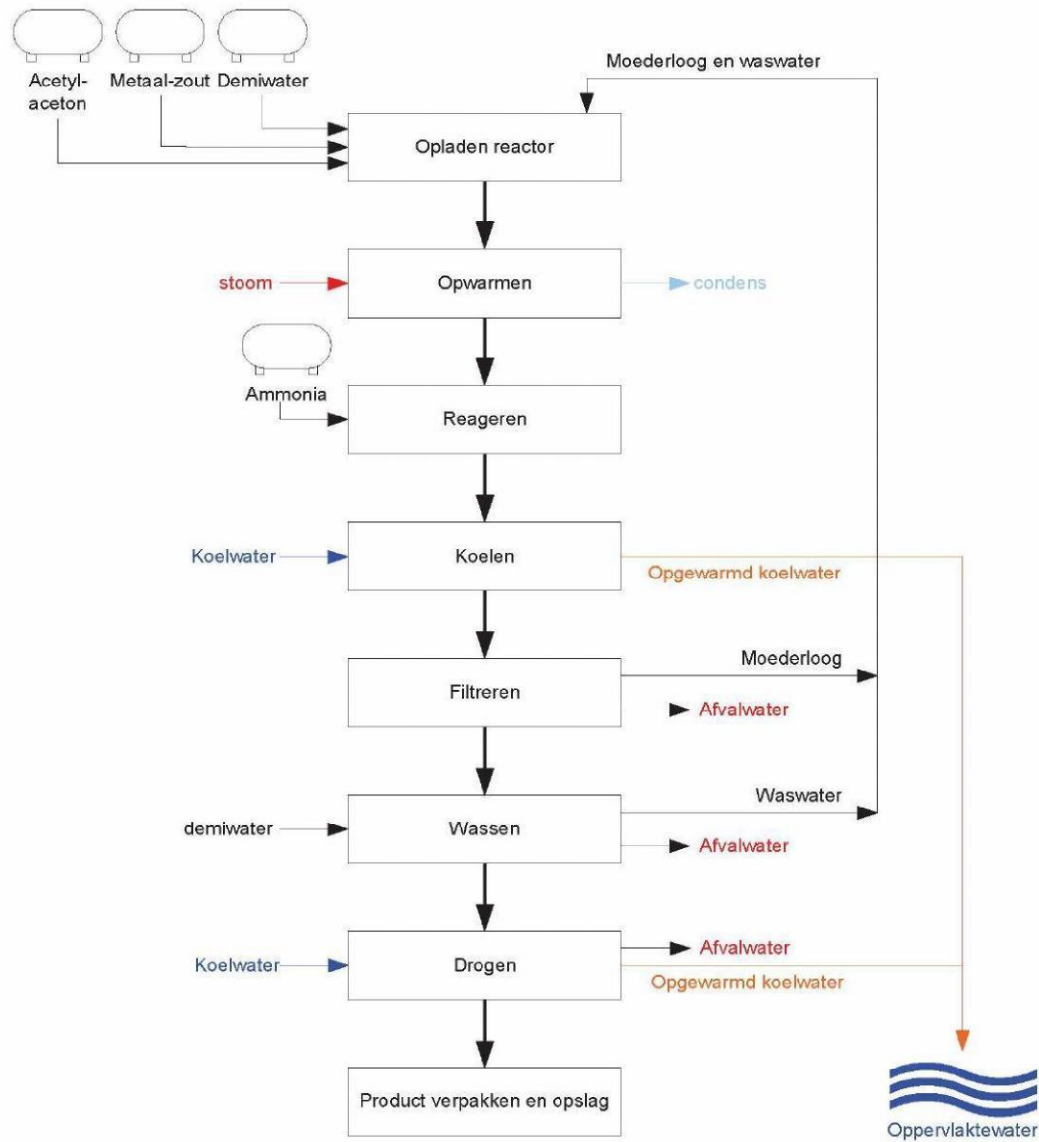
## QUATS DROOG



# QUATS WATER/OPLOSMIDDEL



# Metaal ACA (Cl<sup>-</sup> / oxiden / SO<sub>4</sub><sup>2-</sup>)



## Metaal ACA ( $\text{OH}^-$ / oxiden / $\text{CO}_3^{2-}$ )

