

General overview Smurfit Kappa Parenco



Smurfit Kappa Parenco – Renkum NL

Sustainability is an essential and integral part of our business operations

We are a:

- ▶ Frontrunner in sustainability
- ▶ Responsible and attractive employer
- ▶ Reliable partner for all stakeholders



History of the mill

100+ years of dedicated focus on packaging paper and graphic paper

| Corporate & Strategy | 1598 | 1981 | 1983 | 1989 | 2001 | 2006 | 2012-13 | 2017-18 |
|----------------------|--|---|-------------------------------|--|--|---|---|--|
| | First paper mill ("The Bock") founded in Renkum, Netherlands | Bankruptcy of Van Gelder; factory continues under "Parengo" | Haindl Paper acquired Parengo | Reparco acquires businesses in Nijmegen and Randstad | Norske Skog acquires Parengo from Haindl Paper | Reorganisation and over €5m investment in Reparco | Acquisition of Parengo and Reparco by H2 Equity Partners | Footprint optimization and investment in the new sorting line at the mill site |
| | | 1985 | 1987 | 1997 | | | Reorganization and substantial improvement of profitability | Divestment of Nijmegen in 2017 and The Hague in 2018 |
| | | Start of Reparco operations | Reparco acquires Van Irsel | Reparco invests in new 22,000m ² site in Nijmegen | | | Divestment of Reparco USA | |
| | | | | | | | | |
| | | | | | | | | |
| | | | | | | | | |
| | | | | | | | | |

FOUNDATION AND DEVELOPMENT OF BUSINESS

BECOMING A WORLDWIDE SUPPLIER

BUILDING A BETTER BUSINESS

| Mill Development | 1912 | 1979 | 1987 | 2003-2004 | 2009 | 2015 | 2015-17 | 2018 |
|------------------|--|--|--|---------------------------------------|---|---|---|---|
| | Van Gelder & Zonen builds paper mill "Renkum 2" on the Rhine shore | Old paper mills of "Renkum 2" are replaced by one new paper mill (PM2) | Parengo builds second paper mill (PM1) | Installation of incinerator (37 MWth) | Parengo idles PM2 and converts PM1 into a SC-B machine | Installation of new sorting line at mill site (€5m) | Conversion of PM2 into a testliner and fluting machine (€86m) | Smurfit Kappa Group acquires Reparengo for €460m as of the 1 st of July. |
| | | | 1989 | | | | | |
| | | | PM2 is modernized | | All wood processing lines and one waste paper processing line are stopped | Investment in fully automated warehouse (€3.5m) | Successful ramp-up of PM2 and entrance into containerboard market | |
| | | | | | | | | |
| | | | | | | | | |
| | | | | | | | | |
| | | | | | | | | |

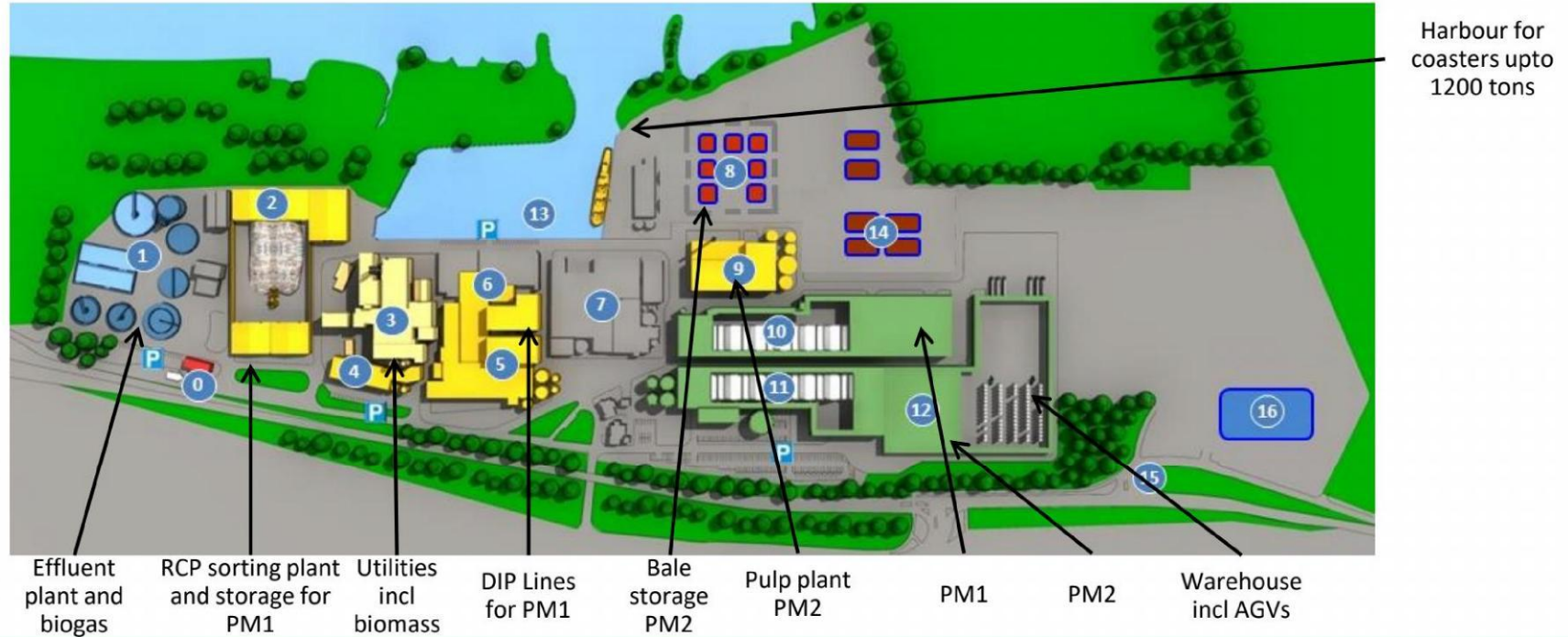
Smurfit Kappa Parenco: 2 PM's

PM1 is a graphical (SC-B) paper machine - PM2 is a packaging paper machine



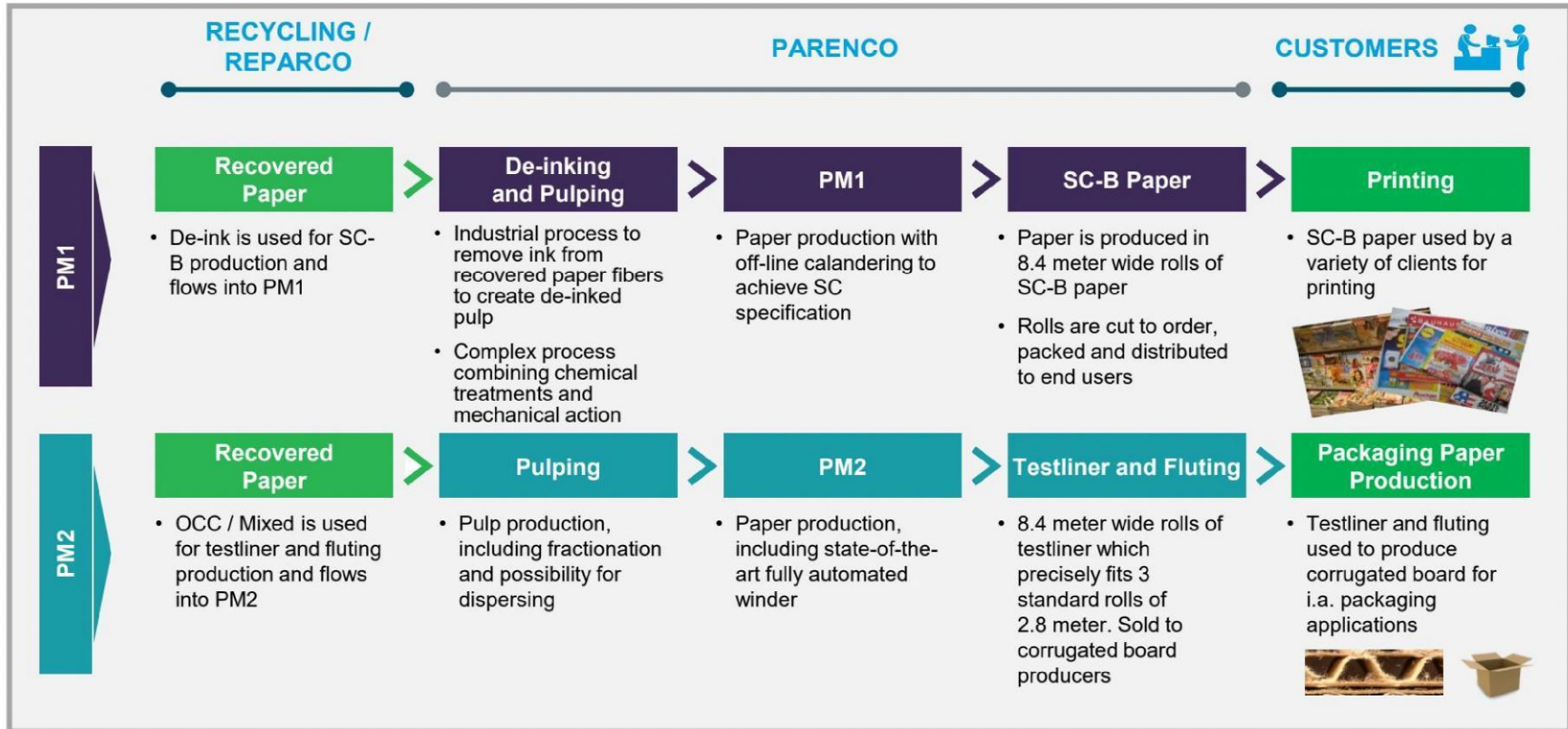
Smurfit Kappa Parenco- Site lay out

Total site surface 40 hectares



Business model overview

Two production lines supplied for 100% with recovered paper



SK Parenco's Main assets

PM1



PM2



PM1 – graphical paper



Constructed in 1987, rebuild in 1998

Design speed: 1600 m/min

Trimmed width: 8,56 mm

Products: Super Calendered B (SCB)

Grammage: 45 - 56 g/m²

Capacity: 285,000 t/y

PM2 – packaging paper

Build in 1979, rebuild in 2016

Design speed: 1200 m/min

Width : 8,65 m

Products: Fluting and Testliner

Grammage: 80 - 120 g/m²

Capacity: 400.000 t/year



End products

Our product offering
is broad and varied



Sustainability

SK Parenco → circularity at its core



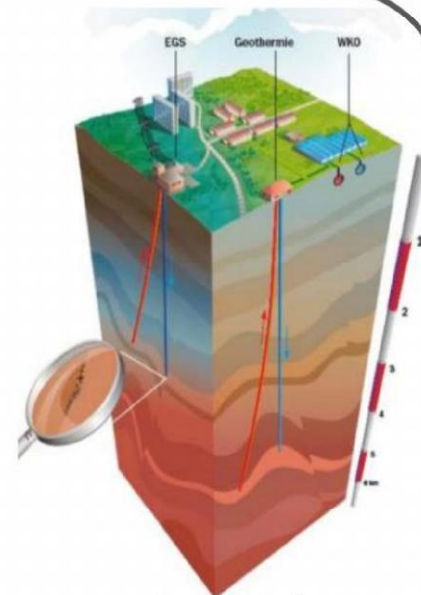
100% recovered paper



Biogas production



Biomass boiler

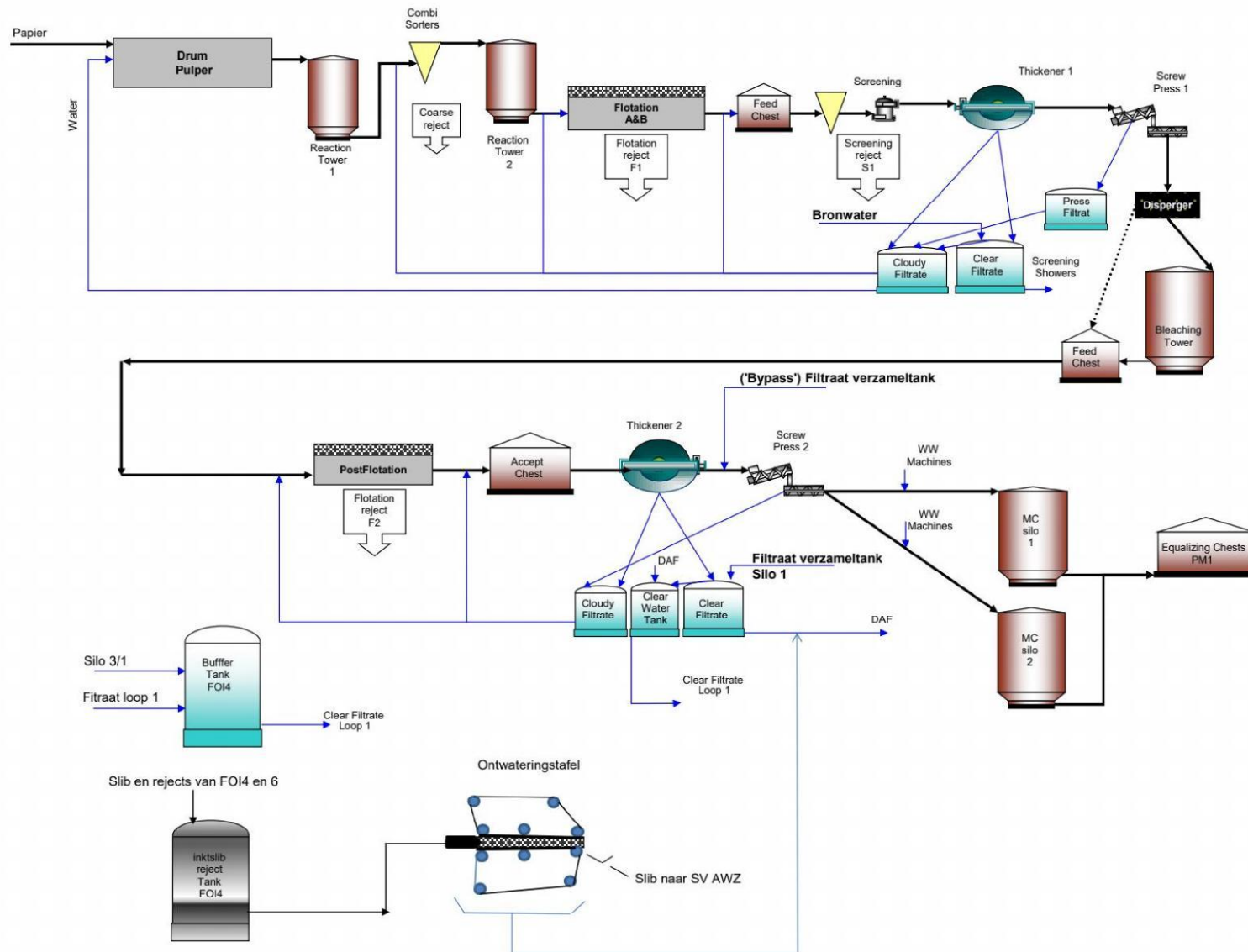


Geothermics
(development)

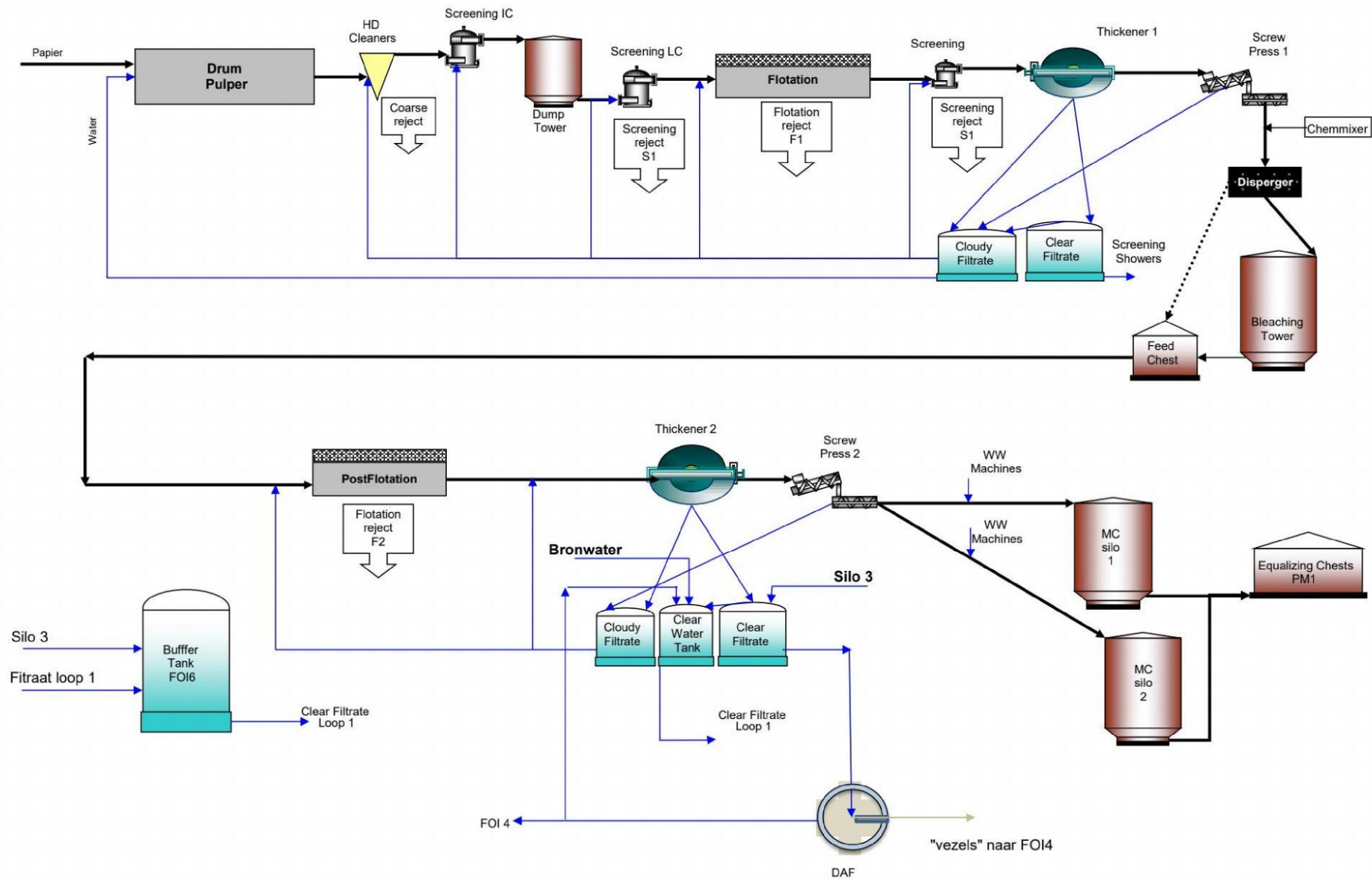
Simplified Flowsheets

- ▶ Flotatie-Ontinkting-Installatie (FOI)
- ▶ Papermachine 1
- ▶ ReCovered Fiber-installatie (RCF)
- ▶ Papermachine 2
- ▶ Centrale
- ▶ Afvalwaterzuiveringinstallatie

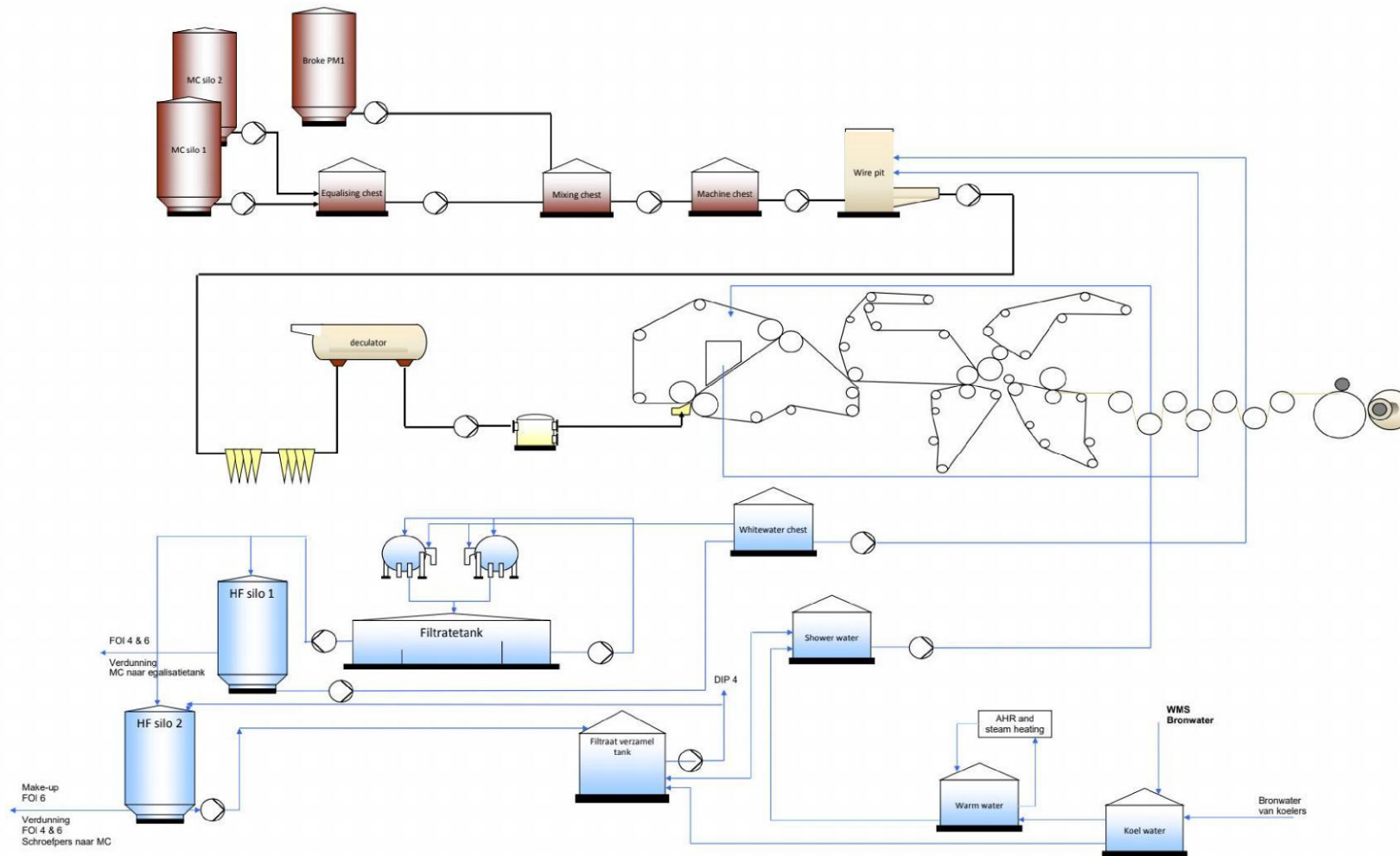
FOI4 - Simplified Flowsheet



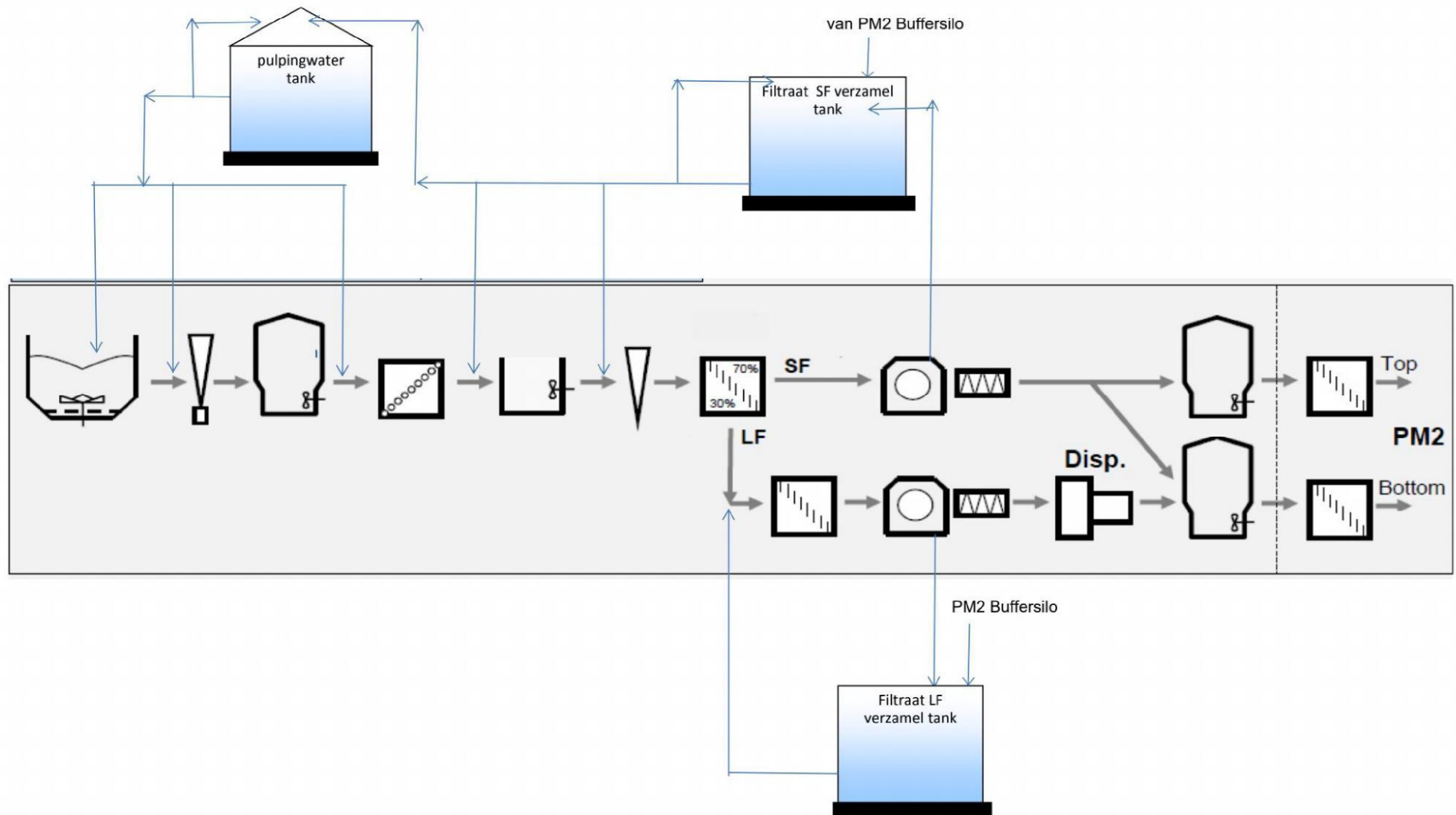
FOI6 - Simplified Flowsheet



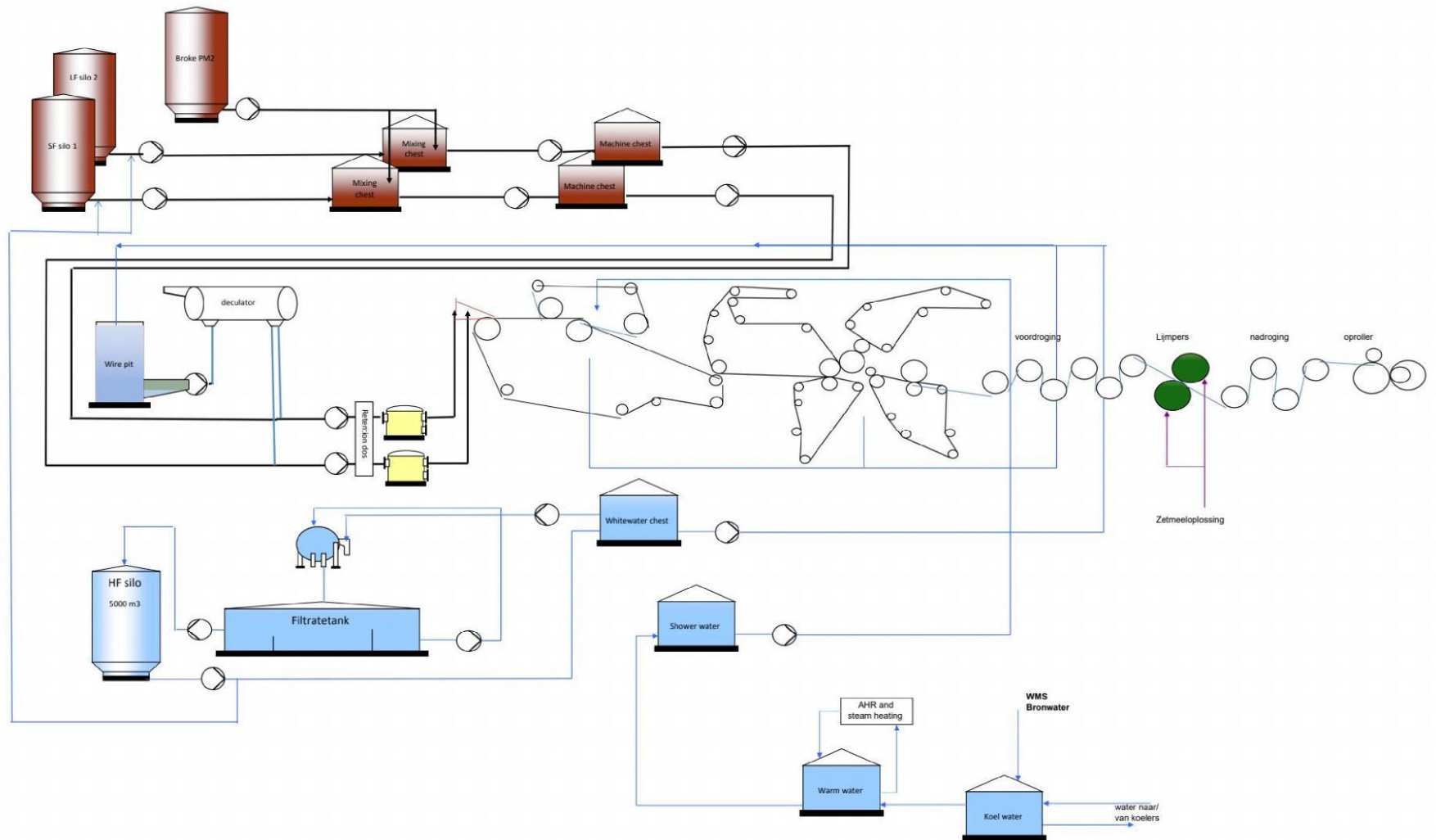
PM1 - Simplified Flowsheet



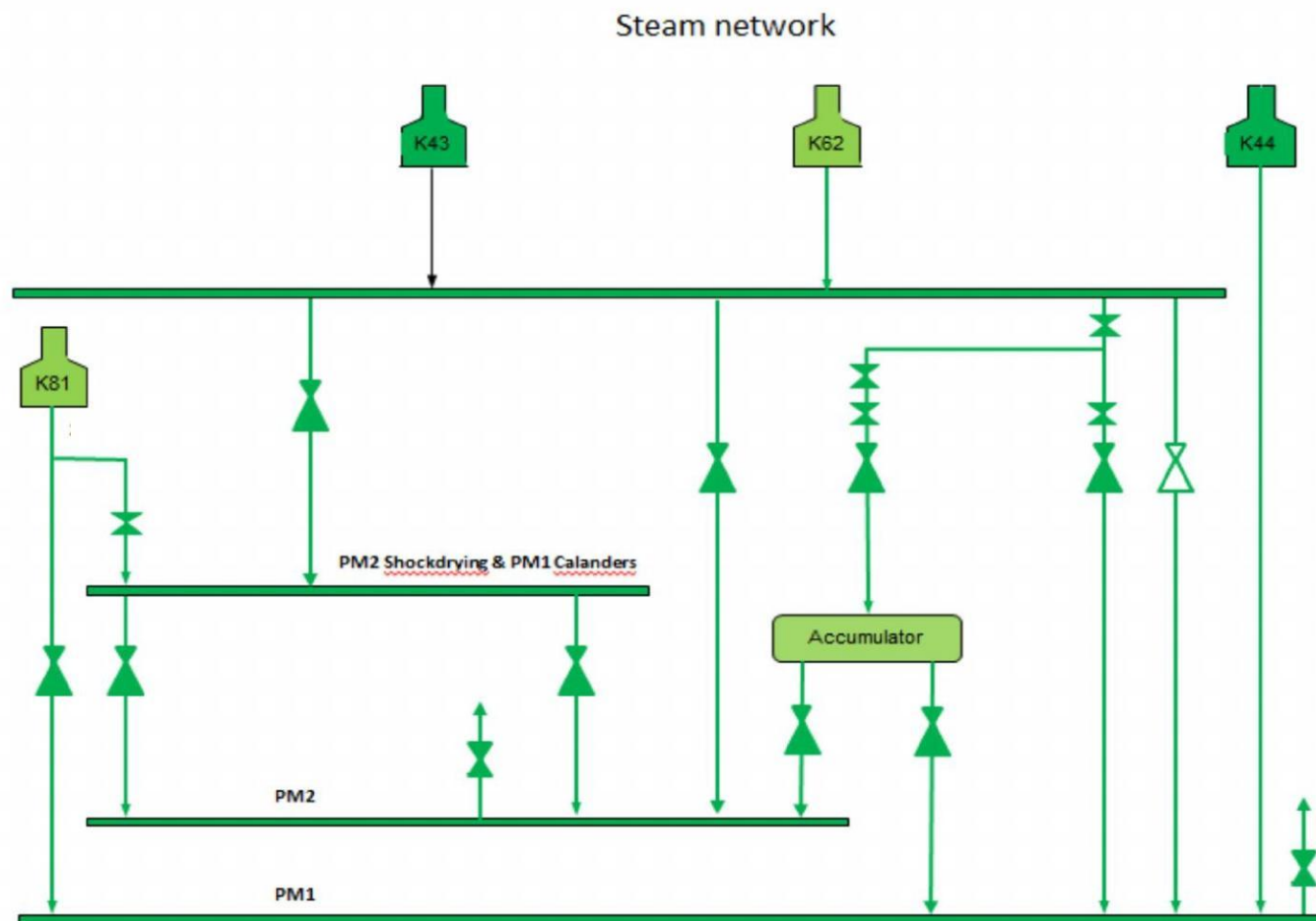
RCF - Simplified Flowsheet



PM2 - Simplified Flowsheet



Centrale - Simplified Flowsheet



AWZI - Simplified Flowsheet

