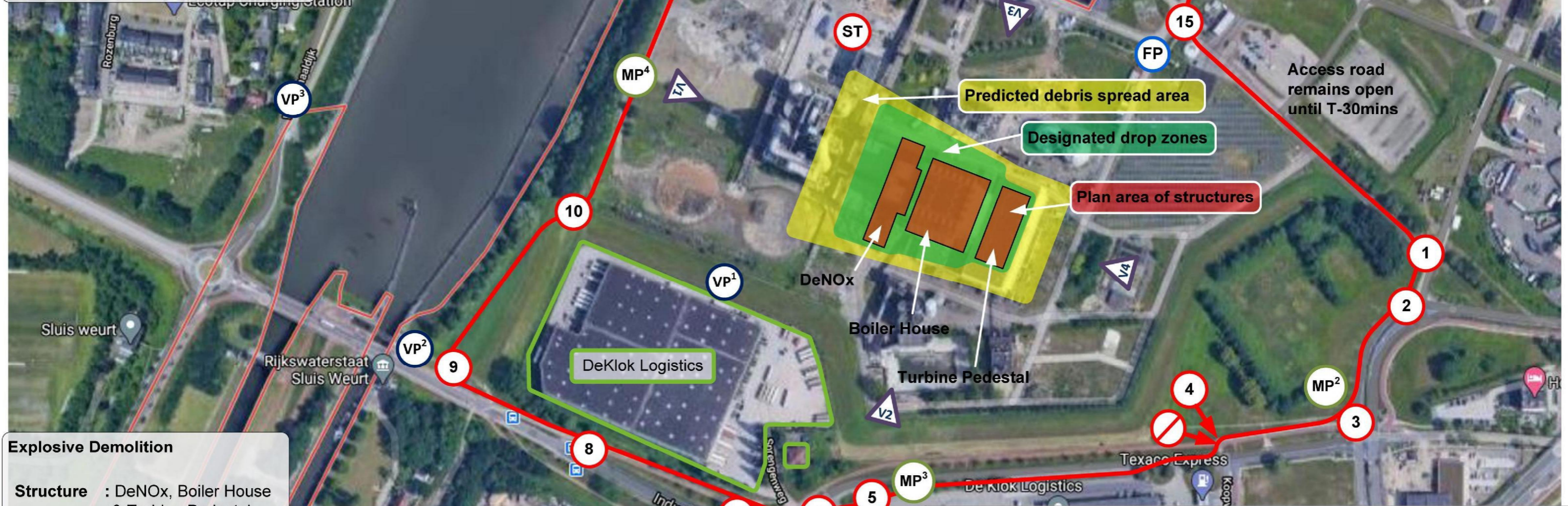


**Key**

-  Exclusion Zone
-  Sentry position
-  Control point (inc firing point)
-  Road closure
-  Environmental monitoring point
-  Vibration monitoring point
-  Video camera position
-  Search team
-  Non essential Personnel



**Explosive Demolition**

**Structure** : DeNOx, Boiler House & Turbine Pedestal

**Date** : October 2022

**Time** : Please see sequence of events

For dust control measures please refer to the dust management plan



**BROWN & MASON**  
 Anson House, Schooner Court,  
 Crossways Business Park,  
 Dartford, DA2 6QQ  
 Tel : 01322 277731 Fax : 01322 284152

<b>Site :</b> Centrale Gelderland Power Station		<b>DRG by :</b> 5.1.2e	
<b>Titel :</b> Exclusion Zone Plan Denox, Boiler House & Turbine Pedestal		<b>Grootte</b> A3	<b>Rev</b> 3

<b>Drg Nr.</b> C2002/BDM3/EZP001	
<b>Datum :</b> 17/08/22	<b>Schaal :</b> Not to scale
<b>DRG by :</b> 5.1.2e	<b>Rev</b> 3