




Key

 Indicative locations of Water Cannon Sprays

 Indicative location of water spray 'wall' comprising 4No. Spray heads – 

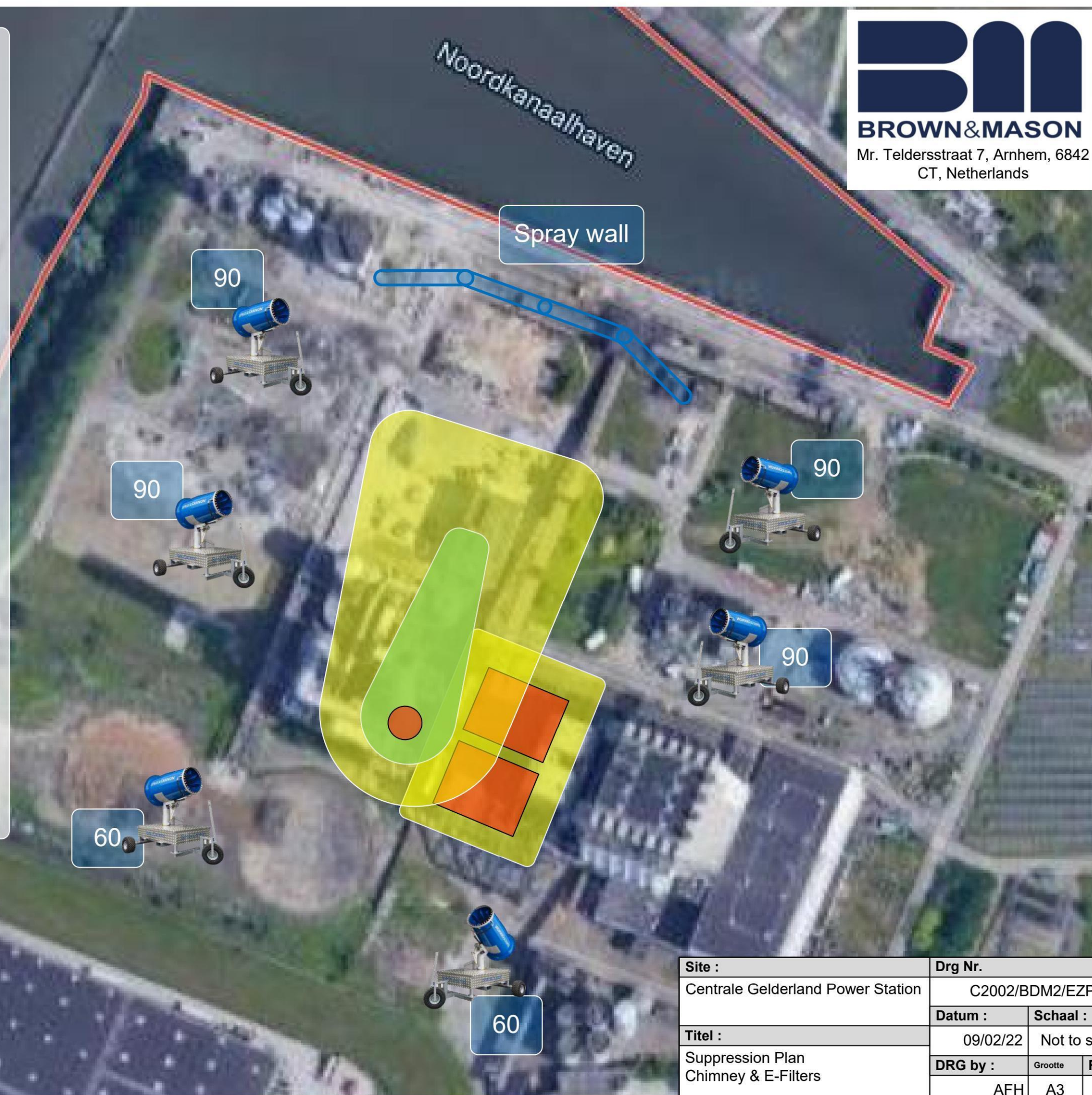
Notes

- The system has been designed to provide the optimum reasonable suppression of dust
- The dust suppression system will be turned on 15minutes prior to blow down and run until any dust has settled.
- The system of cannons and sprays will be supplied by 2No. 40m³ containers. Each container will be continuously filled by a pump to ensure water pressure.
- The final location of the system components will be agreed with ODRN prior to blow down



BROWN & MASON

Mr. Teldersstraat 7, Arnhem, 6842
CT, Netherlands



Site :		Drg Nr.	
Centrale Gelderland Power Station		C2002/BDM2/EZP002	
Datum :		Schaal :	
09/02/22		Not to scale	
Titel :		DRG by :	
Suppression Plan		Grootte	
Chimney & E-Filters		Rev	
AFH		A3	
		1	