

DUTCH HELI DAY '19

Za. 3 augustus

Locatie: Stroeërweg 46
Aanvang: 11.00 uur
i.c.m. Oogstfeest Stroe

Ontmoet de
piloten en hun
machines!

GRATIS
ENTREE



Bekijk een
echte Apache
van dichtbij!



JOINT HELICOPTER PILOTS
jhp

www.jhp.aero

ALL TIMES ARE LOCAL TIMES

Dutch Heli Day Stroe

Introduction

1. The Joint Helicopter Pilots (JHP) will organize a Fly-In and static display at the Stroëerweg 46 In Stroe on the 3th of August 2019 between 11:00 and 17:00LT.

Objective

2. To provide the participants with the necessary information to perform efficient and safe flight operations.

Execution

3. Display Area

All helicopters will be displayed at the parking area next to the helicopter aiming point (Appendix B), N52° 10' 30" E005° 40' 41".

4. Regulations

- a. All operations are in accordance with the Dutch national regulations.
- b. Minimum circuit altitude 200 ft.
- c. Avoid sensitive areas (village Stroe).

5. Display Briefing

Display Briefing is conducted by phone on the morning of Saturday 3th of August. Approach instructions will be discussed during briefing.

Before your flight to Stroe make contact with [REDACTED] 5.1.2e for the final details, [REDACTED] 5.1.2e

6. Safety

The Netherlands Aviation Police could be present during flying displays. They may use digital height measuring equipment. Altitude infringements can be fined according to law.

7. ASO (Aeronautical Station Operator)

General. Although the ASO (Aeronautical Station Operator) is a fully qualified and experienced air traffic controller (Rotterdam-The Hague Airport), due to national regulations it is not allowed to issue ATC clearances.

Predetermined procedures will apply. The English language will be used for all air-ground radio communications.

a. Frequencies.

JHP Fly-In:	122.350 Mhz	C/S: JHP Radio
<i>Regional Flight Information Service</i>		
Dutch Mil Information:	132.350 Mhz	

b. Call-sign. Displays will use their aircraft-registration as their display call sign.

d. Altimeter Setting. All display flying will use the regional QNH of Amsterdam; this will be available on request.

f. Take-off and landing. Heli spot at the Stroëerweg 46 in Stroe will be used for take-off and landing.

g. Holding. When advised by JHP Radio.

8. Breathalyzer Tests

The Aviation Police may conduct breathalyzer tests on aircrews before display flying. Please bear in mind that the limits, at 0.2 mg/ml, are considerably lower than the limits allowed for driving.

Emergencies

9. In-flight emergency

In case of an in-flight emergency and if circumstances permit, proceed to diversion airfield. Otherwise land at the nearest suitable spot and inform Dutch Mil or JHP Radio.

10. Diversion Airfields

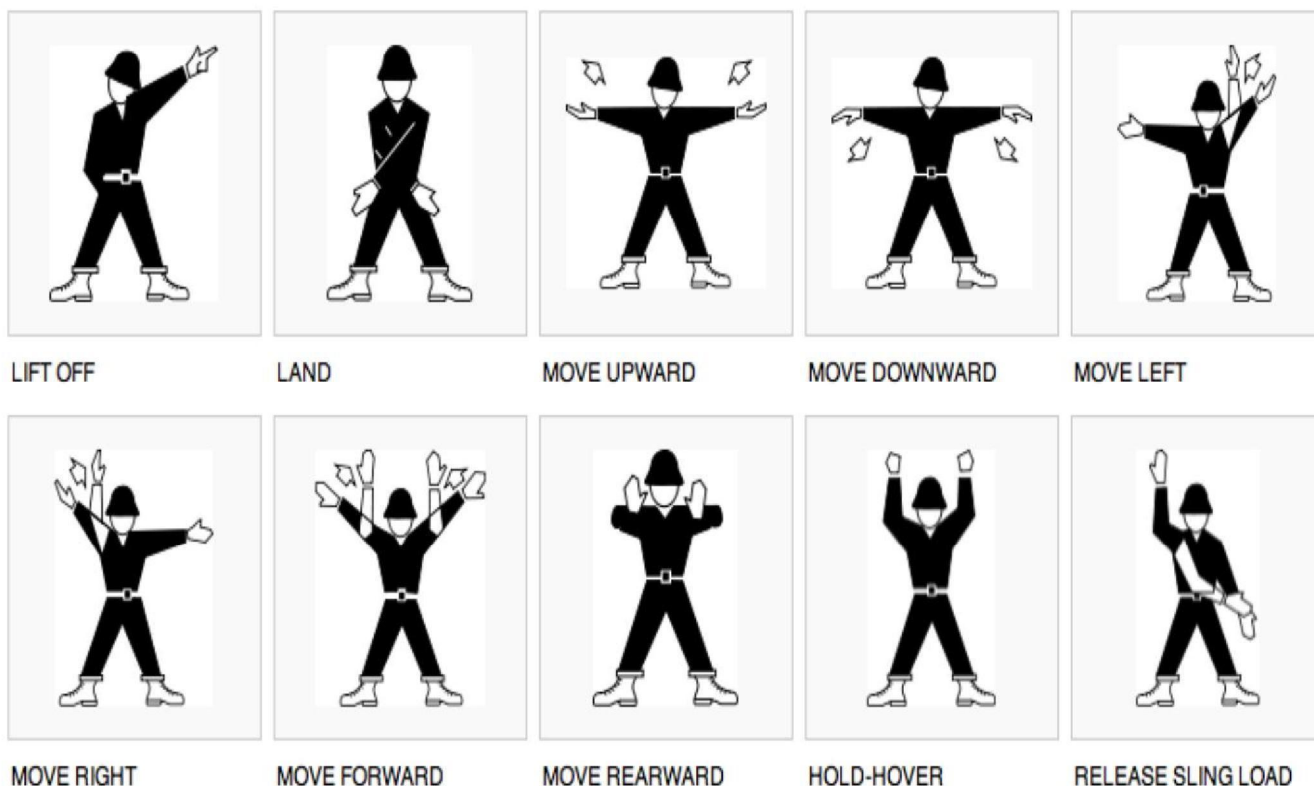
Advised diversion airfields are Teuge (EHTE) or Lelystad (EHLE).

11. Approach procedures

Approach: Report when 5 minutes out. After receiving instructions, join the circuit at downwind and execute one touch and go, followed by a full stop.

12. Parking procedures

Parking at the display: A professional marshaller from Rotterdam-The Hague Airport is present to provide taxi and parking instructions. The marshaller will use standard ICAO marshaller signs



13. Departure procedures

Departure after the display: Depart after one circuit via shortest convenient routing and report to JHP Radio when clear of the area.

14. Communication failure

Approaching Stroe. If ASO has reported “area is clear”, you are automatically allowed to approach the field and the area will remain clear for you. Otherwise check the area, overfly the landing area and land when possible.

15. Coordination

Point of contact:

Display Director: [REDACTED] 5.1.2e [REDACTED] 5.1.2e p [REDACTED] 5.1.2e [@heliflight.nl](mailto:[REDACTED]@heliflight.nl)

ASO : [REDACTED] 5.1.2e , [REDACTED] 5.1.2e

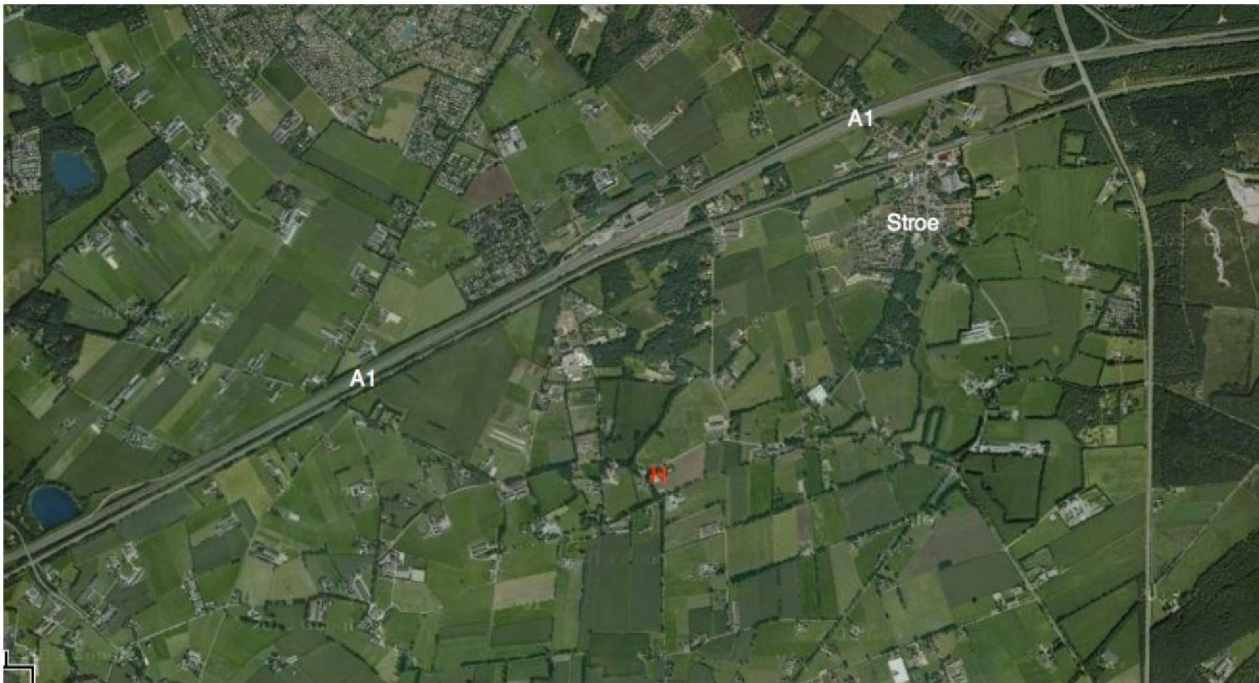
16. List of Appendixes

- a. Appendix A: Local map Stroe
- b. Appendix B: Landing area and parking spots
- c. Appendix C: Gyrocopter landing specification
- d. Appendix D: Programme

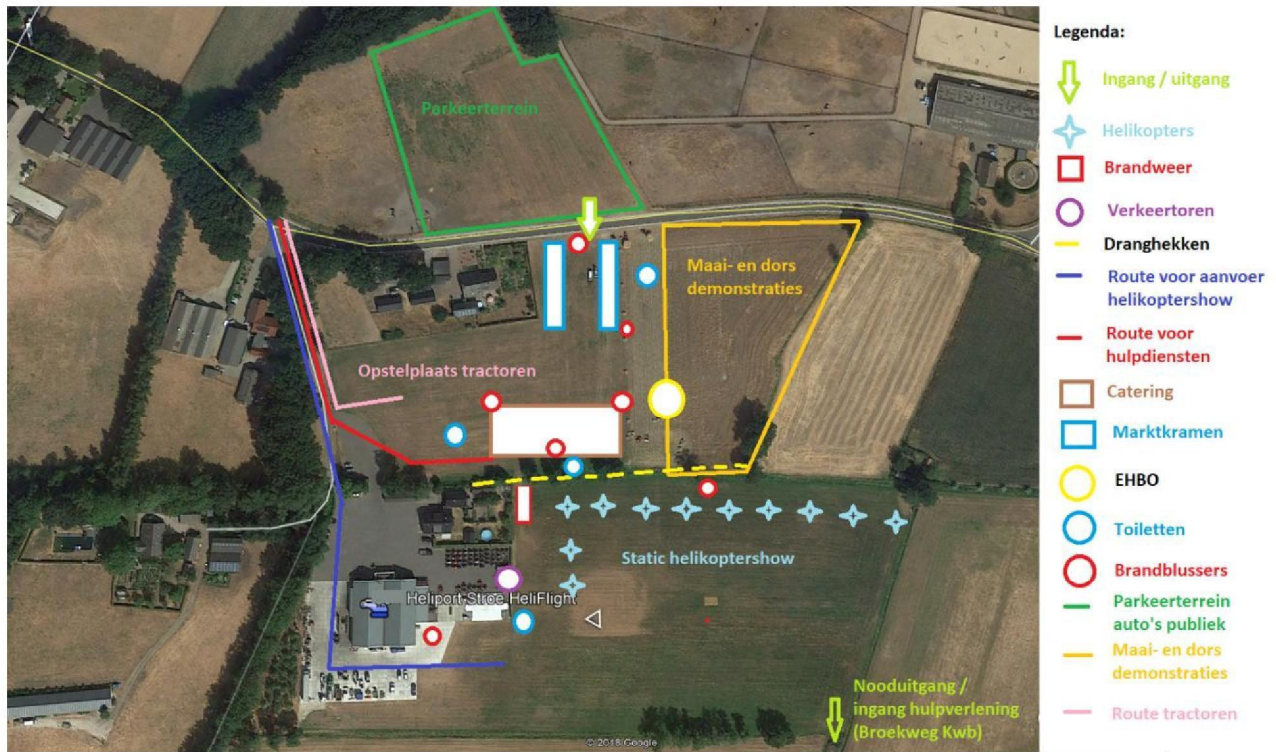
17. General

The entire organization, with all its employees of this event, is for participants, spectators and other attendees not liable for any damage acquired during this event. The participant takes part in the event at his own risk.

Appendix A ; Local map Stroe



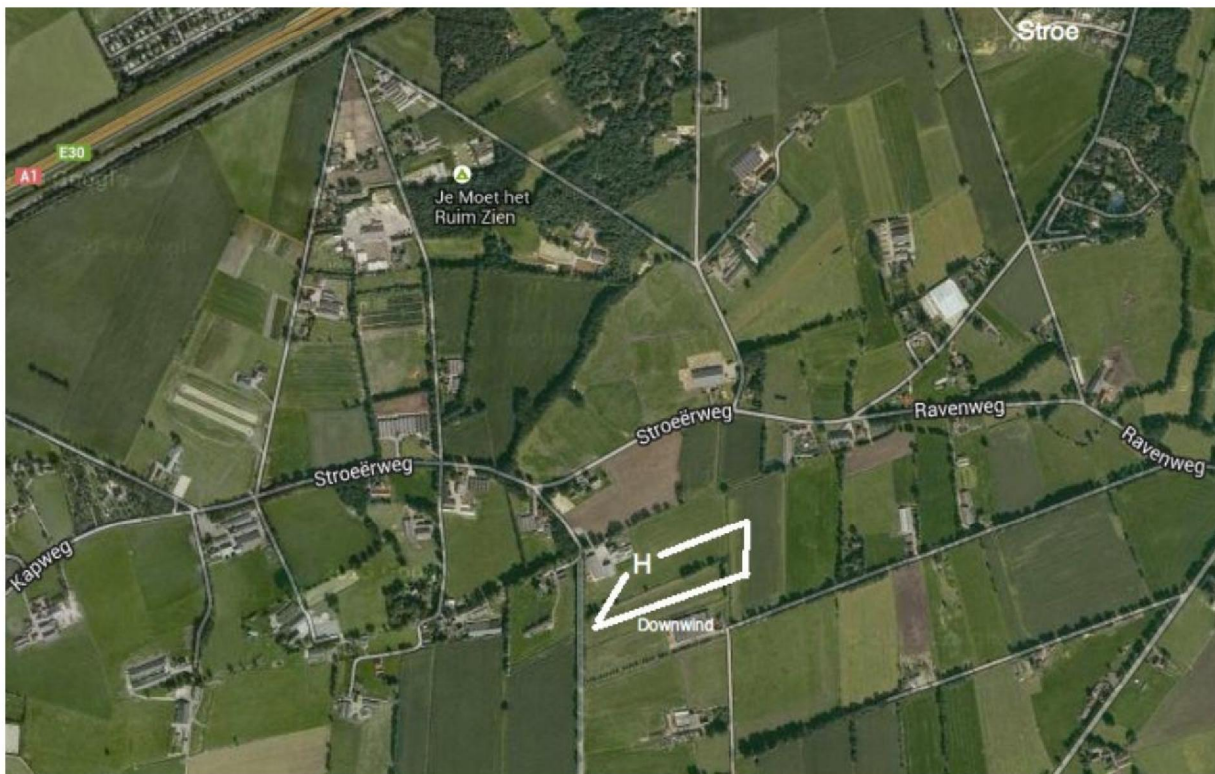
Appendix B; Landing Area and parking spots



HeliFlight 

Locatie:
Stroeerweg 46, 3776 MJ Stroe (GLD)

52°10'28.83"N
5°40'36.27"O

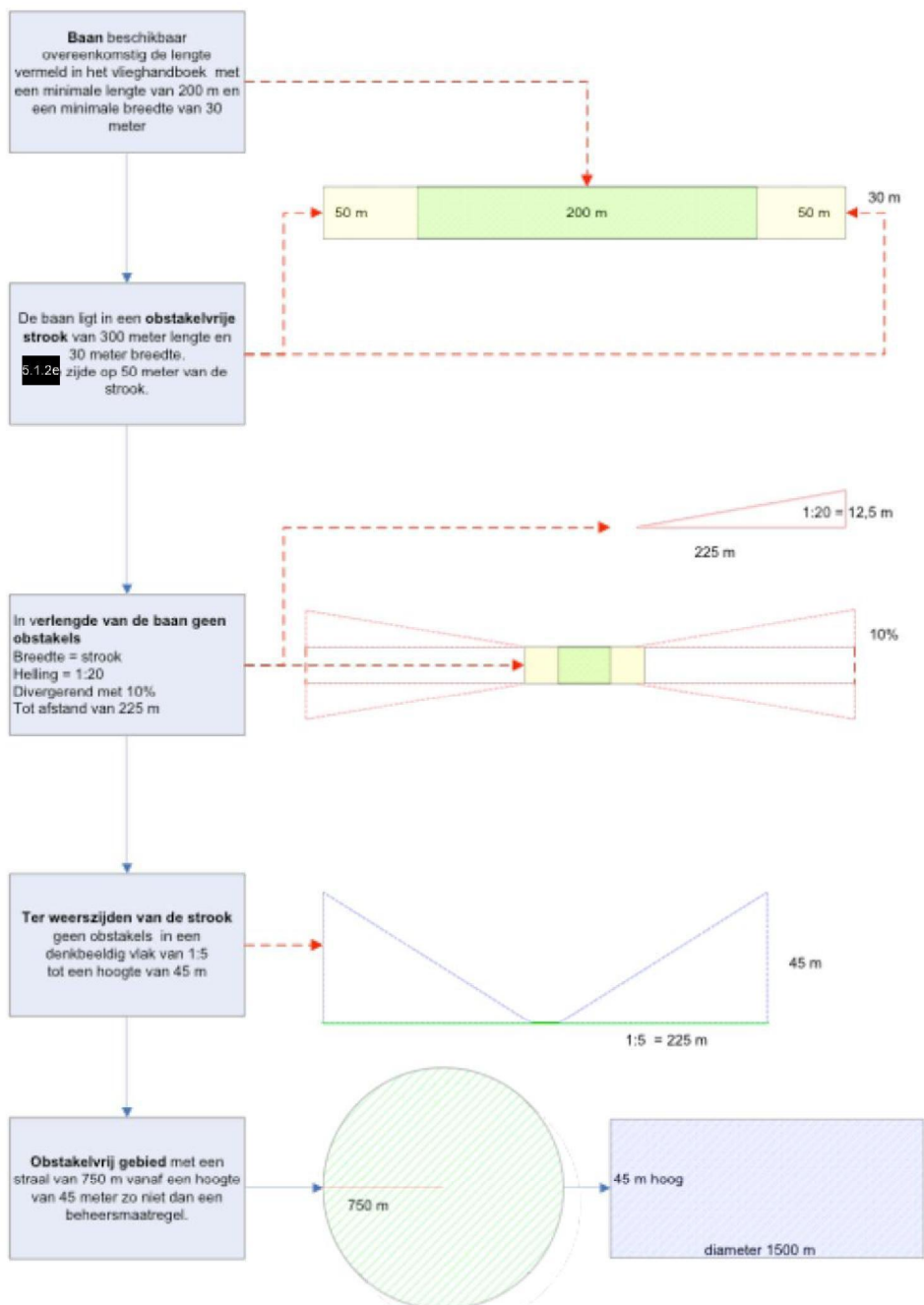


Appendix C, Gyrocopter landing specification



Versie: 0.4: d.d. 17-08-10

Overzicht specifieke eisen voor een luchthaven voor gyroplanes
 (Schematische vertaling van artikel 34 RVGLT exclusief algemene eisen art. 20 en 22)



ILT/Luchtvaart

(Aan dit schema kunnen geen rechten worden ontleend.)

Appendix D, Programme

nr	ETA	Pilot name	Call Sign	Type
1	11:00	Koninklijke luchtmacht		Cougar
2	11:05			
3	11:10	Heli-Holland	PH-ESF	EC175
4	11:15	5.1.2e (Helispot)	OE-XJV	R44
5	11:20	5.1.2e	PH-ENK	R44
6	11:25	Helicentre	PH-HCE	R66
7	11:30			
8	11:35	5.1.2e	D-HKLE	EC120
9	11:40		N353CE	AS350
10	11:45	5.1.2e	YU-HVZ	Gazelle
11	11:50	5.1.2e		EC-120
12	11:55	5.1.2e	PH-KTM	R44
13	12:00	Heliair	PH-RBC	EC-120
14	12:05	5.1.2e	PH-4P8	Gyrocopter
15	12:10		PH-LPH	EC120
16	12:15	SP Luftbild	D-HIKE	MD500
17	12:20	Heli Holland	PH-ECE	EC-120
18	12:25	Heliair	PH-WIK	AS-350
19	12:30	5.1.2e	PH-HGB	R44
20	12:35	Heliair	PH-ULK	AS-355
21	12:40			
22	12:45	Rotary and Wings	PH-RWY	BO-105
23	12:50	Helicentre	PH-HCF	Cabri
24	12:55	5.1.2e	PH-ITI	EC-130
25	13:00	Heliflight	PH-KGJ	EC-120